



The Land Conservancy of New Jersey

ANNUAL REPORT

- 2022 -



Boonton, NJ

tlc-nj.org

STAFF

David Epstein *President*

Barbara Heskins Davis
Vice President, Programs

Sandy Urgo *Vice President, Land
Preservation*

Amber Ray *Director of Development &
Communications*

Ken Fung *Senior Mapping Manager*

Aaron Cela *Land Preservation Specialist*

Linda Glosinski *Land Preservation
Specialist*

Yvonne LoGiudice *Senior Land
Preservation Associate*

Breanna Durkin *Membership &
Outreach Manager*

Kate Munning *Communications
Manager*

Robert Santee *IT & Project Manager*

Dennis Briede *Stewardship Manager*

Siobhan Noland *Development Associate*

Karen Buchanan *Bookkeeper*

John Ursin, Schenck Price *Counsel*

Sarah Howe *Planning Fellow*

Will Parker *Planning Fellow*

THE LAND CONSERVANCY OF NEW JERSEY
2022 YEAR IN REVIEW

Since 1981, we have been dedicated to protecting land and water resources throughout the state in order to build environmental resilience and fight the climate crisis. Here's how we did in 2022.

Land Preservation
We preserved 313 acres, bringing our grand total to 29,119 acres in 492 separate transactions.

Stewardship
Received the 2022 Great Places in New Jersey Public Space award for South Branch Preserve from the NJ Chapter of the American Planning Association.

Training Future Leaders
We awarded \$37,500 in scholarships to five NJ students studying for careers in conservation. The second year of our planning fellowship for graduate students brought in some great talent.

Greening New Jersey
Completed a total of 14 plans in 2022: 7 open space updates, 5 for farmland preservation, 1 for flood acquisition, and 1 environmental resource inventory—a total of 188 plans since the program's inception.

Building Community
Educational workshops, happy hour hikes, and volunteer events brought together like-minded people, helping us raise our profile and get the word out about our 42-year legacy in conservation.

tlc-nj.org

The Land Conservancy of New Jersey



Fall asters at South Branch Preserve

BOARD OF TRUSTEES

Andy Dietz *Chair*
Bruce Hyde *Vice Chair*
Kaki Pierson *Secretary*
Jeremy Doppelt *Asst. Secretary*
Tom Scudese *Treasurer*
John P. de Neufville *Ex Officio*

Sherri Albrecht
Andrew Allen
Teresa Finlay
Berkley Harmon III
Dennis J. Krumholz, Esq.
Spence Mehl
Elise Morrison
Dr. Grant Parr
Barbara Wattenbach
John Yingling

The Land Conservancy of New
Jersey

Trustees Emeritus: Sally R. Epstein,
Pat Kennelly, John Lundberg,
Sally B. Martin, Peter Meyer

FAREWELLS & A WELCOME

Change is a natural part of life, but it wasn't easy saying goodbye to a number of Land Conservancy board members in 2022: Rick Simon, John Yingling, Albie Booth, Peter Meyer, and Carolyn Simpson. Most retired after many years of service but remain devoted to our organization, and we are tremendously grateful for that. John passed away and will be missed. All of them have helped make TLCNJ what it is today.

We were pleased to welcome Andrew Allen to our board in November. Andrew has his own engineering firm, GKL Environmental Consulting, and lives in Newton with his wife and three children.

FROM THE PRESIDENT

Nature teaches us that there is sustainability in diversity. A healthy ecosystem contains a wide array of plants and animals working in concert with water, fungi, and other natural resources to survive and thrive. Taking a page from Mother Nature, The Land Conservancy of New Jersey has a 42-year legacy of tackling climate change and protecting natural resources on several fronts: preservation, restoration, education, and planning for the future.

2022 was another year of accomplishments for The Land Conservancy of New Jersey, while we also carefully laid the groundwork for future successes.

In the face of ever-present threats to local and global green spaces, it's imperative that we encourage more people to be advocates for land preservation, stewardship, and education. Ensuring our communities and planet can thrive is work that must be done collectively.



David doesn't shy away from the dirty work on volunteer days.

Your continued support makes it possible to complete this work, which is featured throughout this report. We are deeply grateful for your contributions to keeping New Jersey healthy and beautiful!

Your support of this work provides the funding and encouragement we need to keep going. Thank you for being a member!

A handwritten signature in blue ink, appearing to be 'David' followed by a stylized name.



Great blue heron at Pequannock Watershed Preserve

LAND PRESERVATION

We completed nine land acquisitions totaling 313 acres, bringing our grand total to 29,119 acres in 492 separate transactions. One of these properties was the sixth addition to Yards Creek Preserve, which is part of the William Penn Foundation's Delaware River Watershed Initiative. This expands the preserve to 301 acres.

We preserved five farmland easements in Hope, Blairstown, White, Green, and Bedminster. Bergen County hired us to help preserve the final 10 farms remaining in NJ's mostly developed county.

A small but mighty five acres in West Milford was also transferred to Wawayanda State Park. This missing link completed the Terrace Pond North Trail, a popular trail with stunning views that connects the Warwick Turnpike to a magnificent glacial pond. People can now hike from Route 23 to connect with the Appalachian Trail on the New York border. That's nearly 40 miles of trail now protected on public land.

The Land Conservancy of
New Jersey

PINELANDS PRESERVATION

We launched the Pinelands Preservation Fund to support future land preservation projects in the Pinelands, thanks to an auspicious \$250,000 challenge gift plus \$70,000 raised through grassroots campaigns and at the Gray Cup. A climate resiliency grant to map properties in the Pinelands is now helping us identify key preservation areas. In addition, TLCNJ was one of only three organizations in New Jersey to receive a \$1 million Green Acres grant, which allowed us to expand our project area to include the Pinelands in Ocean County.



Hungry member of the Community Garden at South Branch

STEWARDSHIP

At Nancy Conger West Brook Preserve, the second phase of the West Brook restoration project is well under way. We removed a dilapidated barn, created a second new parking lot, removed a dam to lower water levels for year-round resiliency, and removed invasive plants. We also started transforming overgrown pasture into water-retaining woodlands by planting hundreds of native trees and shrubs.

The 2022 Great Places in New Jersey Public Space award was awarded to South Branch Preserve by the New Jersey Chapter of the American Planning Association for our work transforming our most active preserve into a hub for community activities outdoors.

We sold all 145 plots at the Community Garden at South Branch, and the Raritan Headwaters Association installed a water monitoring station on the South Branch of the Raritan River so both organizations can collect data and study the effects of climate change on the river's water quality.

At Ramapo Mountain Preserve, REI volunteers tackled the tough job of taking down an old hunting lean-to, so now hikers will have a clear view as they hike around the pond. Even more volunteers finally completed the cleanup at Split Rock Mountain, with 300 volunteers removing 1,000 tires and 6 dumpsters of debris over 11 days. We also helped the Ramapo Lenape Nation submit a successful \$250,000 grant to restore an ancient cemetery.

Our partner City Green completed an amazing fourth year, growing 51,197 pounds of fresh organic vegetables at South Branch Preserve. They donated 4,848 pounds to The Land Conservancy for distribution to local food pantries—quadruple the amount we required.

EDUCATION

This year we awarded scholarships totaling \$37,500 to five outstanding students, bringing our total awards to \$367,500 since the program began in 1985. These individuals embody many of our organization's values, including leadership, racial and gender equity, and a passion for protecting our natural resources.

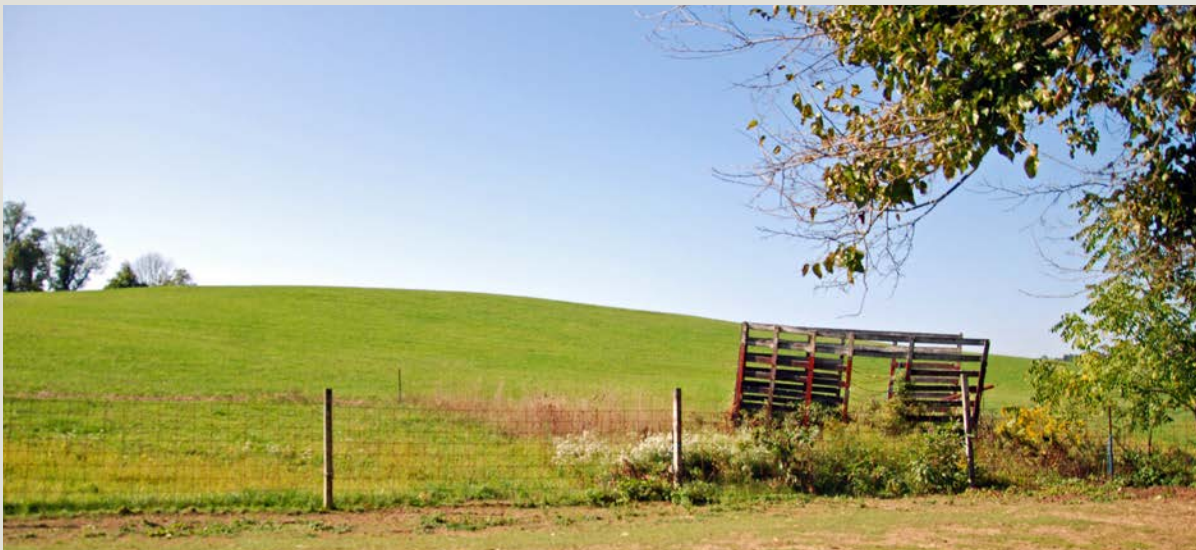
We welcomed 10 interns and three planning fellows in 2022, which means a whopping 156 interns have worked with The Land Conservancy since 1985!

Satoni Zaccaro, our creative and ambitious outdoor education intern, was named Richard M. Sargent Intern for 2022 for launching our Pollinator Program in partnership with the Boys and Girls Club of Paterson and Passaic. The curriculum focuses on pollinators and their importance to the local food supply. Students learn about the importance of nature, and that small actions can have a big impact. Connecting the dots between the natural world and one's daily life makes environmental conservation tangible. The children planted and cared for milkweed seedlings, then planted them in the pollinator meadow at South Branch Preserve. Year one was such a success that we are working to raise funds to expand this program and make it permanent.



A Pollinator Program student plants milkweed at South Branch Preserve

"This has been the most incredible work experience, and so deeply gratifying. You are an amazing group of people who have been so welcoming, supportive, and helpful. Thank you for all that you do to inspire young interns and all you do for the communities of New Jersey. I will always cherish this experience." —Paige Buzard, planning intern



Fields at Sunset Farm in Hope, NJ

MUNICIPAL SERVICES

Our planning team received some well-deserved accolades this year, winning the 2022 New Jersey Planning Official Achievement in Planning Award for expanding farmland protection efforts in the region, and for assisting county and municipal partners in updating and adopting farmland preservation plans. We have completed over 40 of those plans to date, with more in the works.

- Provided open space preservation advising services to two counties, 22 towns, and one nonprofit.
- Completed a total of 14 plans in 2022, the most we have ever done in a single year. This included seven open space plan updates, five farmland preservation plans, one flood acquisition plan and one environmental resource inventory. We have now completed a total of 188 plans since the inception of the program.

The Land Conservancy of
New Jersey

DELAWARE RIVER CHAMPIONS

TLCNJ continues to be a leader within the New Jersey Highlands cluster of the William Penn Foundation's Delaware River Watershed Initiative. We have completed six land preservation projects in the Delaware River watershed, in addition to our own Yards Creek Preserve, which we're growing to 1,000 acres. There's still a long way to go, but many different organizations are working in concert to keep this conservation momentum going.



The 2022 Land Conservancy Fondo riders

BUILDING COMMUNITY

Bringing nature lovers together for a purpose feeds our work in so many ways: it can raise funds, recruit new members, educate on the importance of conservation, and create new friendships. Our 2022 events hit all the marks.

In June, 100 guests spent the day on a world-class course to raise money to support the future of conservation at the Gray Cup. It was our best one yet, bringing in \$135,000 to support our work all over the state. In September, a devoted group of riders enjoyed spectacular weather for the second annual Land Conservancy Fondo.

As they rode around the hills of Passaic County, a bald eagle greeted them at Greenwood Lake, and the ride back to West Milford offered breathtaking views of the Appalachian Trail. We raised \$6,200 to preserve more of these beautiful places they rode past.

Some of our community events are all about fun—no work necessary. We continued happy hour hikes through the summer and fall, and then in November led a full moon hike through lesser-known South Branch Preserve South. The sky was perfectly clear as we walked a moonlit path to a meadow where we stargazed, called for owls, and snacked on hot tea and ginger snaps.

We organized 14 events in 2022: eight volunteer days and six hikes and outdoor education events.

The Land Conservancy of New Jersey

VOLUNTEERS

For the past two years The Land Conservancy has been building a cadre of dedicated volunteers—people who will come out to do the dirty work of land conservation. In 2022 there were 113 of these unsung heroes—willing to selflessly lend a hand when we need them most. Their efforts have been instrumental in our ability to clean up and maintain many of our most sensitive properties.

Before we could close on Split Rock Mountain, we had to clean up of debris left behind from decades of dumping. Over 11 days, 300 volunteers removed a dozen old cars, 1,000 tires, and six dumpsters of garbage.

Similarly, tree planting days at two of our preserves complemented our long-term preservation work, from the pollinator meadows at South Branch to the stream restoration on the West Brook.

An essential component of this work is doing it in the context of this community of people who care about the land.



REI volunteers at Ramapough Mountain Preserve

This year saw the return of our Partners for Parks program, which offers corporations and civic organizations fun, satisfying service projects in public parks in their communities. Since 1996, Partners for Parks has completed 487 projects with more than 8,475 volunteers, winning awards all along the way. So we were delighted to work with an REI team at Ramapo Mountain Preserve, where they maintained trails and even took down an old hunting lean-to so hikers will now have a clear view as they hike around the pond.

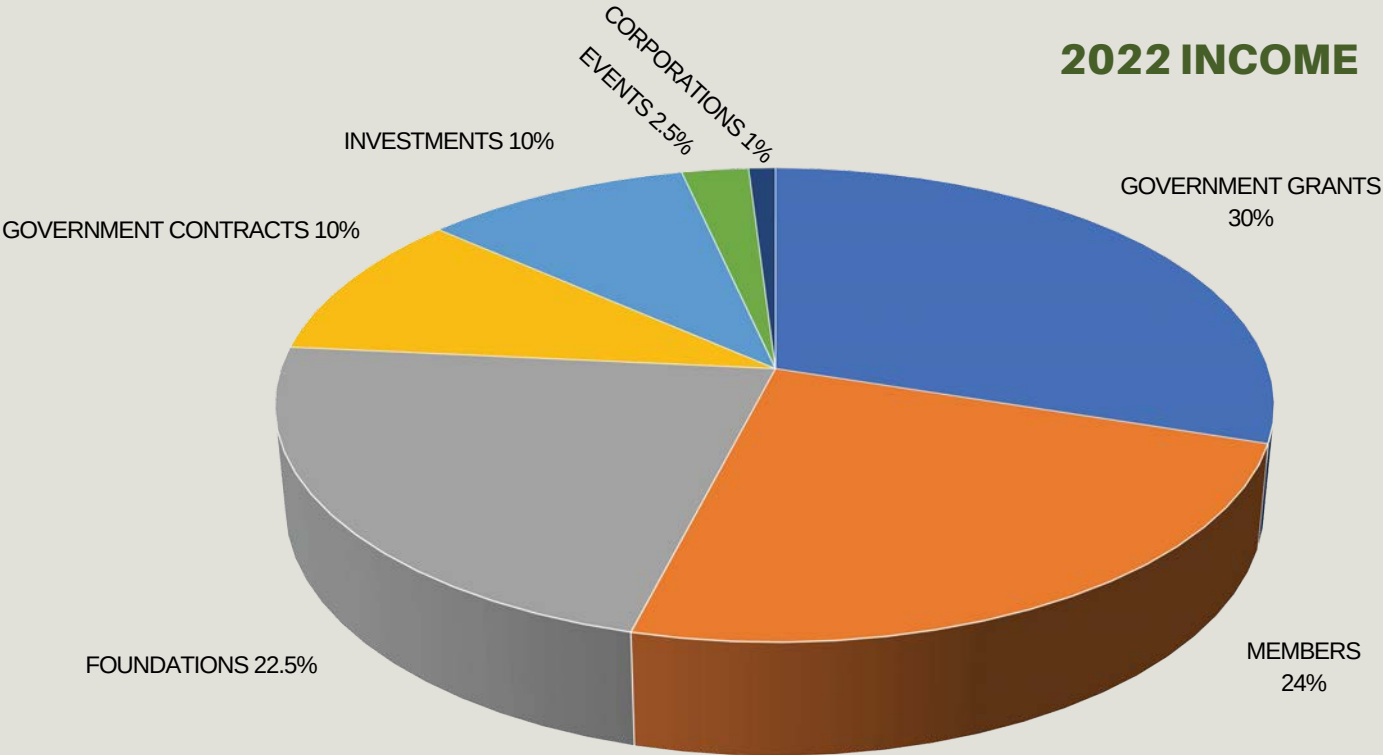
124 people have joined our list of volunteers who want to help us care for our preserves—a 65% increase from last year.

The Land Conservancy of New Jersey

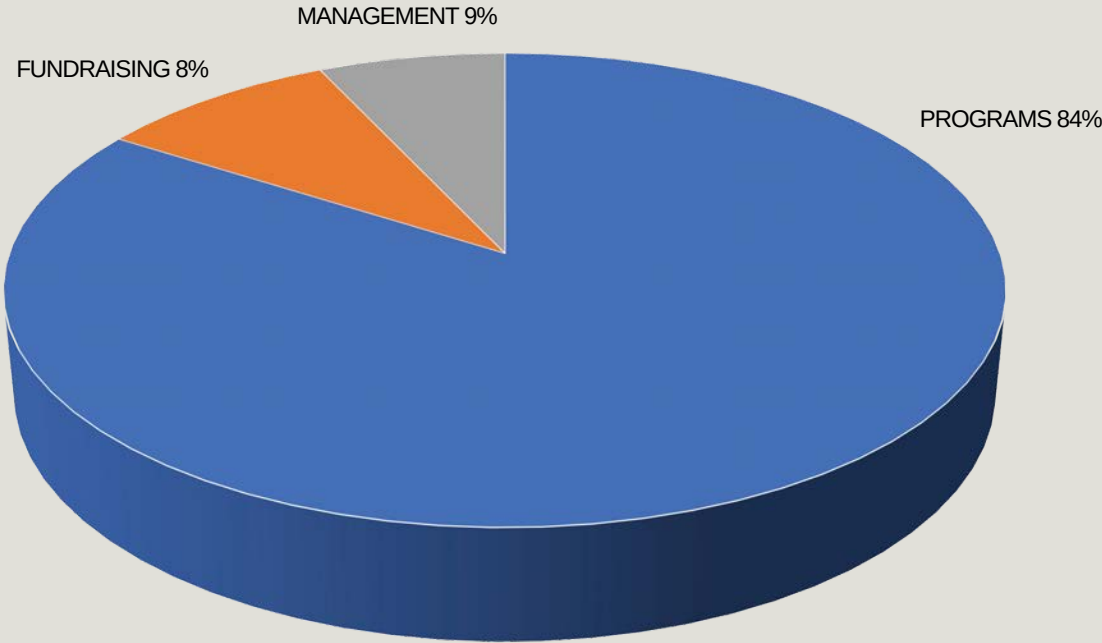


FINANCIAL REPORT

2022 INCOME



2022 EXPENSES





Pollinator meadow in bloom at South Branch Preserve

LEGACY GIVING

Join the dedicated individuals and families who have already taken steps to ensure open space and clean drinking water will continue for future generations. By directing your legacy gift to The Land Conservancy of New Jersey, you will continue to be an advocate for land preservation for years to come.

For every person that informs The Land Conservancy of their planned gift commitment, The Land Conservancy will receive \$1,000 today. This campaign was started to encourage and inspire supporters to make gifts for the future and, in return, help us immediately raise funds as well. To join today:

- Name The Land Conservancy of New Jersey in your will or living trust. New commitments and previously established bequest plans qualify. Additionally, you can name The Land Conservancy as a beneficiary of your IRA, 401(k), or other qualified plan.
- Visit tlc-nj.org to fill out a form and let us know your plans, or contact Director of Development Amber Ray at (973) 541-1010 x25 or aray@tlc-nj.org to receive the form by mail or email.
- After your form is filled out and processed, The Land Conservancy will receive \$1,000 today!

HOW TO LEAVE A LEGACY

There is power in creating an estate plan to benefit the charities that mean the most to you. Tips for leaving a lasting legacy:

1. Commit to putting your affairs in order.
2. Provide for yourself first.
3. Provide for the people you love next.
4. Then provide for the organizations you love.
5. Finally, implement.

MEMBERS

15 + YEARS

Thelman Achenbach	Richard Derrick	Peter Haugk	Vincent & Abigail Maddi
James Ahlstrom	Richard & Maryann Di Palma	Gates Helms Hawn	Barry Mandelbaum
Sherri Albrecht	Andrew Dietz	Healey Family Foundation	Laura Marchetti
Richard Amon	Joseph Dimino	Hector Mislavsky & Judy	Joanne Margiotta
Margo Beller Anderson	Bill Dluzniewski	Martinez	William Marino
John Anderson	Jeff Dobro	William Hery	Jeffrey Mark
William Anderson	John Donofrio	John & Suzanne Higgins	Sally Martin
Stuart Anderson	John Drzik	Susan Hoag	Rene Mathez
Mike Austin	Douglas Duerr	Becky Hoskins	Charles Maute
Astri Baillie	Gail Duffe	Samuel Huber	Rose McCauley
Ken Baker	John Duffy	Wayne Huebner	Tom McCough
Pat Balko	Polly Eberhardt	Hugh & Margaret Huntzinger	James McIntosh
William Barton	Donald Eberhart	The Hyde & Watson	Susan Mellen
BASF Corporation	Jeanne Eisele	Foundation	Thomas Melone
Bassett Foundation	Kristin Elliott	Barbara Irving	Cynthia Merwin
Robert and Donna Batic	Madelyn English	Robert Ivry	Peter Meyer
Bruce Benson	Regina Epperly	George Jackson	Stanley Mikulka
Tom & Joanne Bintingier	David & Patricia Epstein	Donald Jackson	Steven Minassian
Phillip & Sheryl Bishop	Alan Epstein	Bruce Jacobs	Jim Moody
Carolyn Bishop	Sally Epstein	Michael Jaffe	Robert More
Elizabeth Bitterman	Barbara Fanelli Ringheim	Ted Jones	Valerie Morgan
Grosvenor & Betsey Blair	James Ferguson	David Kaiser	Dennis Morgan
Janet Bone	Patricia Finkle	John & Mimi Kaplan	Brian Morrell
JoAnn Bowman	Stephen Fogle	Gerhart Karg	Morris Township Library
Warren Braunwarth	Caroline Ford	Tom Keena	System
George Breece	Carole Fortenbach	Patricia Kennelly	Rachel Mullen
Peter & Madeleine Brennan	Robert Fredericks	Jefferson & Karen Kirby	Kenneth & Kathy Murphy
Gordon Brummer	R. Don Freeman	F.M. Kirby Foundation	Jeanne Nakazawa
Karen Buchanan	Rodney Frelinghuysen	A.P. Kirby, Jr. Foundation	Barry Nelsen
John Bunnell	Frelinghuysen Foundation	Elizabeth Gray Kogen	Herbert Noffke
Lois Burns	Anne Fritts	Michael & Barbara Kowalski	Kevin Northover
Thomas Burnnett	Jacqueline Galka	Sybil Kramer	Michael O'Connell
Brian & Ginny Bussey	Jim Gallagher	John Kuzel	Robin Oettle
Thomas Caine	Ned Gardner	Ronald Lacey	Margaret Packie
Frank Calabrese	Bonnie Gardner	Patrick Lanza	Marisa Paradiso
Chip Carver	William Gates	Robert Leamer	Grant Parr
Eve Casey	Tom Gazal	Ron Leavesley	Paul Payton
Frank Centore	John Gilris	Charles Leiwant	Roy & Carmelina Persson
Roger Clapp	Eugene Gionti	Will Leland	Edmund Peters
Diane Close	Paula Gottesman	Jeff & Penny Leman	Robert & Julia Peterson
Gary Cohen	Stephen Gray	Richard & Beth Levine	Lou Phillips
Bill Conger	Graymer Foundation	Pete & Marsha Lewin	David Piscitelli
Robert Coultas	Richard Greendyk	Elizabeth L'Hommedieu	Paula Plant
Eileen Curran	Steve Gruber	Janet Loengard	Janet Porsche
Philip Dahlen	Jackie Gunn	Carl Loutzenheiser	Richard Post
Faye & Sheldon Darack	Florence Halbert	Rocco Lovascio	Martin Prentice
Glenn & Barbara Davis	Barbara Hall	David Luber	Mary Purzycki
Marc & Antonia De Luise	John Hambright	John Lundberg	Ann Quinn
John de Neufville	William Hand	David & Barbara Lustbader	Michael & Virginia Ranger
Michael Dee	James Hanson	James Lynch	Jean Rich
Frank DeLaney	Adrian Hartman	Ralph Macchio	David & Maureen Rogers

MEMBERS

15 + YEARS

Chuck Rosencrantz
Bruce Rothmann
Eleanor Rowe
Roxiticus Foundation
Douglas Rubin
Sue Rudd
Eric Rush
Ellen Rutkowski
Louisa Sargent
William Sawyer
Barbara Sayres
John Schott
Clarie Searing

James Sens
Don & Lynn Siebert
Rick Simon
John Simonelli
Jo Sippie-Gora
Stephen Smith
Linda Snyder
William Spellman
Thomas Stark
J. Robert Starkey
Barbara & Mr. Robert Starr
Anthony Stellato
Emil Stevens
Gregory Stewart
George Sudol
Bill Sweeney
Paul Tamburri
James Thomson
Joan Thuebel
Eric Timsak
Arthur Tuchfeld
Tom Unger
Richard & Beverly Van Duyne
Joseph Vaughn
Roger Vellekamp
Victoria Foundation
Jackie Vnencak
Bob Voll
Charles Walker
Mark Walmsley
Robert Ward
Sara Webb
Garth & Sally Jo Weber
Lawrence Weimer
Lola Weiss
West Essex Woman's Club
Lennard & Judith Wharton
Christie & Greg Whitehouse

Michael Whiting
John Wilde
John Wilmot
Woman's Club of the
Denville-Rockaway Area
Carl Woodward
Nancy Yingling
Mel Zander
Pamela Zave
David & Andrea Zugale
John Zung

10-14 YEARS

John Azzoli
Edward Baker
Giorgio Balzer
Sue Barbuto
Keith Barton
Robert Benz
Seth Bodner
Beth Branigan
David Brown
Sylvia Brown-Sanders
Jenifer Nina Burghardt
Charles & Jeanie Chapin
Gary Cogswell
Sue Collins
Mary Beth Cooney
Thomas Cote
Marilyn Crane
Brenda Curnin
Susan Darago
Alvin Dietz
Anna-Lisa Dopirak
Dr. Stephen Verdesca
& Pat Durner
James Dykema
Envirotactics Inc.
Francois Errandonea
Teresa Finlay
Lynn Forsell
Sheldon Freidenreich
Jeff Fulton
John & Liz Gianis
James Giordano
Sandy Goodson
Jonathan Gottscho
Bruce Graham
Melanie Gray
Tom & Connie Halliwell
Noreen Harten



Happy hour hike at Nancy Conger West Branch Preserve

Nancy Holland
Brian Honan
Evan Howell
Richard Huhn
Susan & Edward Jenner
Bob Jennes
Johanette Wallerstein
Institute
Sid & Marty Jones
Robert Kerwin
Kim Kleasen
Robert Kucharski
Gerald Kurlandski
The Leavens Foundation
Marilyn Lenat
Victor Levine
Arnold & Ellen Lieber
Cindy Linton
Leonard Lyon
Michael Lyons
The Maciorski Family
Joshua Mackoff
Thomas & Joanne Marino
Joann Marzocco
McCarter & English
Tracy Meerwarth-Pester
Carl Mendez
John Merritt
Christopher Michaels
Susan Michniewski
Vic Miller
Alan & Charlotte Moors
Barbara Moran
Edmond & Jill Moriarty
Stanley North

Mary Jo Nutt
Steven & Lisa Okyle
Kathy O'Neill
Randi Paul-Heskins
James & Linda Pierro
Catherine "Kaki" Pierson
Gerald Pomper
PSEG Foundation
Al Ragonese
Red Hook Management
George Reskakis
Richard Richter
Jens Riedel
Riker Danzig Scherer
Hyland & Perretti
Steven & Mary Riskind
Stuart & Brooke Rogers
Ed & Betsy Roland
Pat Rolston
Anne Marie Romano
Barbara Ross
Robert Ross
Mary Rottengen
Helga Rotter
Sylvia Rubens
Bruce Rudin
Russo Bros. & Co.
George Schaberg
John Schneider
Tom Scudese
James Shissias
Ursula Sommer
Peter Stamer
Andrew Szwak
Robert Taylor

MEMBERS

Patricia Taylor
Mark Terry
The Hardin Family Fund
Thomas Tobitsch
Nancy Tworischuk
Alan Tyson
Anne & Markus
Van den Bergh
Walter Veit
Anne Wallwork
Peggy Walsh
Roy Ward
Richard Whittaker
James Wood
Sally Woodring
Geraldine Xydas
Cindy Zanca

1-9 YEARS

Alexander Ackley
Lesley Aguirre
Ahearn Family
Willard Alexander
Mary Ellen Anderson
Mark Andrews
Chris Androski
Claudia Antal
Carlo Asaro
Kevin Ascitutto
Ethel Ashenfelter
Jen Auerbach
Paul Augustyniak
Prasad Badapati
Cheryl Bailer
Bank of America
Sandor Barcza
Gordon Bear
Benevity
Andrew Bergen
Sanjeev Bhasin
Kimberly Blais
Bruce Blohm
Carrie & Bradley Bobroff
Gail Boertzel
Peter Bohn
Richard Bonuccelli
Andrew Bradley
Braen Industries
The Brenda Trust

Roger Brick
Edward Bromley III
Bill Bruen
Keith Bubrow
Van Buchanan
Frank Budney
Kathleen Caccavale
Paul Caris
Hugh Carola
Sal Cascone
Finn & Emily Caspersen
Alan Chanin
Donna Chaplin
Charities Aid Foundation of
America
Marvin & Cecilia Chartoff
Jonathan Chewey
Chris Chickering
Chiesa, Shaninian &
Giantomasi
Thomas Cierech
Citizens Philanthropic
Foundation
Clara Jeffrey Charitable
Foundation
Michael Clayton
Rita Cohen
Mary Ann Cole
William Combs
Abigail Conger
Alan Conger
William & Katherine Conger
Carrie Croton
Bonnie Davis
Paula DeBona
Jayshekhar Desai
R. Sean Devlin
Deborah & John Dickinson
Suzanne Diffenbach
Louis Discepola
Madelyn Dolan
Darlene Donegan
Jeremy Doppelt
Doris Duke Charitable
Foundation
Joshua Drew
Andrea Dudek
E.J. Grassmann Trust
Patricia Emison

William Engel
James Engel
Sarah Epstein
Joel Ergas
Lee Espinoza
Carolyn Everett
Exelon Corporation
Mary Fahy
Robert & Theodora Falcone
Mary Fetzter
John Finlay
Patty Finn
Joe Fisher
Geraldine Flach
Steve Frank
Barbara Franko
Marc Friedman
Joseph Frommelt
Alan Fulton
Kevin & Julea Gardener
Eric Gargiulo
Brian Garrison
Sue Garwood
William Gentry
Scott Ginter
Give Lively
Glass4good
Norman J. Goldberg
Daniel Gordon
Kevin Gorman
Nena Green
Amy Greene
Chantal Greffer
Richard Griffin
Verene Grigoletto
Gregory Grillo
Roy Groething
Eleanor & Martin Gruber
GZA Geoenvironmental
David Haas
Loriann Haberthur
Edward Haffy
Mary Hahn
Christine Hajsok
Bryan Hannigan
Colleen Hardcastle
Berkley Harmon
Adrienne Hart
Jackie Hartley

Lisa Harvey-Cicione
Andrew Herman
Shari Hoffman
Cameron Hogan
Sharon Hollick
Robert & Diane Holtaway
Marianne Hosty
Julie Houbolt-Winter
Lucy Hughes
Bruce Hyde
Impact 100 Garden State
Institution for Conservation
Leadership
Lynn Ivans
James Jacobus
Alan Jadro
Gretchen Jaeckle
The Jennings Family
Kenneth Jewell
JM Sorge
Raymond Johnson
Robert Jonas & Estelle
Anderson
Theresa B. Jones
Karen Jones
Kanowa Trust
Andrew Kasper
David Kaufman
Thomas Kean
Timothy & Dorothy Kearney
Ken Martin & Chris Hepburn
Foundation
Yvonne Kiely
Stuart Klein
Toni Klimowicz
Kullman Family
Lakeland Bank
Laura Lander
Nancy Larkin
Thomas Larson
Hillary Launey
Gerry Lauro
Lauren Lebo
Jeanne Levan
Howard Levine
Carla Lee Lewis
Robert Lewis III
David Lowenstein

MEMBERS

1-9 YEARS

John Magnier
Heather Maher
Dennis Mahony
Michael Manheim
Robert Massengill
Stefanie Matteson
The Mayor Family
Marta McDowell
Marshall McLean
Tom Measday
Stephanie Mehl
Spence Mehl
Mary Meila
Jaclyn Melillo
Richard David Menz
Hugh Merritt
Samson & Coletha Mfalila
Nina Mickey
Kristen Middleton
Elizabeth Miggels
Sarah Mikulis
Alexandra Milbank
Rob Mitchell
Hugo Moras
Cheri Morris
Elise Morrison
Andrew Myers
Walter Nahadil
Kelly Nash
Nathan Nassif
Debra Natyzak
Jamil Nazarali
Shawn Nettles
New Jersey Corporate
Wetlands Restoration
Partnership
New Jersey Future
NY-NJ Trail Conference
Newcomers Friends &
Neighbors of Morristown
Next Level
Kenneth Nichols
Notaboat Fund
Glenn Oleksak
Mary O'Malley
S. B. Osofsky
Matthew Pace
Bill Paladini
Thomas Patton
Alan & Janet Payson

Katie Pettit
Bill Pettit
Dana Pogorzelski
Rob & Deb Polishook
Jill Porter
Tom & Lisa Potash
Robert Powers
Michael Prokop
Hilary Prouty
Rick Radis
Alan & Janet Raines
Sara Ramos
Amber Ray
Frank Razzano
Howard Reed
Patricia Reed
J. Paul Rennon
Megan Restuccia
Geoffrey Richards
Bernard Robins
Rockefeller Group
Development Corporation
Barbara Rogers
Bronwyn Rogers Parlette
Kathleen Rose
Robert Rosen
Robert Ross
Jeffrey Roth
Round Table Wealth
Management
Richard Rowinski
Amy Rubin
Stephen Ruhl
Patricia O'Hanlon Rush
Wendy Ryle
Philip Sarin & Margaret
Dahlgren
Lori Salerno
Lloyd Schaefer
Schenck, Price, Smith, & King
Sue Schmidler
Aaron Schrager
David Schwartz
Joe Scully
Noel Sedransk
The Selective Insurance
Group Foundation
Jeffrey Sharlein
Umang & Shefali Shastri
Melanie Shefchik



Buckwheat in bloom at City Green Farm

Craig Shumate
Steve Shyne
Brian Sibiga
Steven Silverman
Simon Quick Advisors
Carolyn Simpson
Kevin & Lynn Smith
James Sonneborn
Danielle Sonye-Reising
Anthony Sprague
Rosemary Stallone
Dennis Stannard
Edward Stavenick
Andrew Stec
Stone Foundation of NJ
Jean Strickholm
Bonnie Sturm
William Stusnick
Neil Szigethy
Edward Tafaro
Arnold Taranto
Teetsel & Jacobs
Charitable Fund
Nick Terlizzi
Title Lines, LLC
Tamara Tobitsch

Uwe Trinks
Joyce Tucker
Andrew & Judith Tucker
ULTATEL
Union Foundation
John Urban
Adam Vandenbos
Chris Vincek
Craig Wachsmann
Michael Wagner
Carol Walczyk
Linda Walsh
David Walsh
Barbara Wattenbach
Rachel Weinstein
Patricia Weissner
Fred Whaley
Michael White
Wilfred M. & George P.
Pitkin Foundation
Fran Wittgens
Jill Wodnick
Ann Wolf
Richard Zipper
Michael Zuckerman



CORPORATE SPONSORS & PARTNERS

AmazonSmile
Ameriprise Financial
Bank of America
BASF Corporation
Braen Industries
Charities Aid Foundation of America
Chiesa, Shaninian & Giantomasi
Citizens Bank
Citizens Philanthropic Foundation
Envirotactics Inc.
Exelon Corporation
GZA Geoenvironmental
IBM Corporation
JM Sorge
Johnson and Johnson Payroll Giving
McCarter & English
Microsoft Matching Gift Program
Network for Good
New Jersey Corporate Wetlands Restoration Partnership
Onto Innovations
Red Hook Management REI
Riker Danzig Scherer Hyland & Perretti
Rockefeller Group Development Corporation
Round Table Wealth Management
Schenck, Price, Smith, & King
Simon Quick Advisors
The Prudential Foundation
The Selective Insurance Group Foundation
ULTATEL

FOUNDATIONS

A.P.Kirby, Jr. Foundation
Bassett Foundation
Clara Jeffrey Charitable Foundation
Doris Duke Charitable Foundation
E.J. Grassmann Trust
F.M. Kirby Foundation
Frelinghuysen Foundation
Graymer Foundation
Healey Family Foundation
Impact 100 Garden State
Institution for Conservation Leadership
Johanette Wallerstein Institute
Ken Martin and Chris Hepburn Foundation
Langdon Palmer Memorial Internship Fund
New Jersey Future
New York - New Jersey Trail Conference
Notaboat Fund
Pierson Family Foundation
PSEG Foundation
Roxiticus Foundation
The Brenda Trust
The Hyde and Watson Foundation
The Leavens Foundation
The Stone Foundation of New Jersey
Union Foundation
Victoria Foundation
Wilfred M. & George P. Pitkin Foundation

TRIBUTE GIFTS

In Honor of Peter Meyer
Glenn & Barbara Davis

In Honor of William H.
Bruce Blohm

In Memory of Carol Vreeland
Nina Mickey

In Memory of Dick Sargent
Louisa Sargent

In Memory of Eileen P.
Anderson
Stuart Anderson

In Memory of Harold Gerken
Patricia Kennelly
William Gentry
Melanie Shefchik
Stefanie Matteson
Glenn & Barbara Davis

In Memory of Helen Hall Hoyt
Fran Wittgens
Kristin Elliott

In Memory of Jack Fritts
Anne Fritts

In Memory of John Yingling
Glenn & Barbara Davis

In Memory of Kenneth
Purzycki
Mary Purzycki

In Memory of Margaret Brown
Mr. & Mrs. George Breece

In Memory of Nancy Conger
William & Katherine Conger

In Memory of Paul J. Hollick
Sharon Hollick

In Memory of Robin Randolph
Susan Darago

In Memory of Rosalie Lavinthal
Richard & Beth Levine

LEADERSHIP CIRCLE



Kayaking on the Delaware River along the Kittatinny Ridge

Sherri Albrecht
William Anderson
Gordon Bear
Carrie & Bradley Bobroff
Andrew Bradley
Chip Carver
Finn & Emily Caspersen
William Combs
Abigail Conger
William & Katherine Conger
Anonymous
George Cubberly
Brenda Curnin
John De Neufville
Michael Dee
R. Sean Devlin
Richard & Maryann Di Palma
Alvin Dietz
Andrew Dietz
Suzanne Diffenbach
Darlene Donegan
John Donofrio
Jeremy Doppelt
James Engel
William Engel
Sally Epstein
David & Patricia Epstein
John Finlay

Theresa Finlay
George L.K. Frelinghuysen
Anne Fritts
Bonnie Gardner
Bruce Graham
Amy Greene
Eleanor & Martin Gruber
James Hanson
Gates Helms & Mary Ellen Hawn
Brian Honan
Sam Huber
Lucy Hughes
Bruce Hyde
Ken Martin & Chris Hepburn
Jefferson & Karen Kirby
Bill Leavens
Jeanne Levan
Richard & Beth Levine
Carla Lee Lewis
David Lowenstein
John Lundberg
David & Barbara Lustbader
Vincent & Abigail Maddi
John Magnier
Tracy Meerwarth-Pester
Spence Mehl
Elise Morrison
Mary Jo Nutt
Grant Parr

Sam Partridge
Lou Phillips
Catherine "Kaki" Pierson
Robert Powers
Michael & Virginia Ranger
Stuart & Brooke Rogers
Stacy & Robert Golding
Bronwyn Rogers Parlette
Robert Ross
Eric Rush
Louisa Sargent
William Sawyer
David Schwartz
Tom Scudese
Steve Shyne
Rick Simon
Carolyn Simpson
Edward Tafaro
Ruth Hardin
The Healey Family
The Jennings Family
Andrew & Judith Tucker
Peter and Joyce Uddo
Rachel Weinstein
Fred Whaley
Christie & Greg Whitehouse
Carl Woodward



Cover crop peas sprouting at South Branch Preserve

WAYS TO GIVE

CHECK: Use the enclosed envelope to send a donation by check today, payable to “The Land Conservancy of New Jersey.”

ONLINE GIVING: Secure online giving is a convenient way to make your gift to The Land Conservancy. We will send an immediate email confirmation once your credit card information has been submitted. Donate at tlc-nj.org.

RECURRING GIFTS: You can set up a recurring gift that will be charged to your credit card automatically each month or year at tlc-nj.org.

MATCHING GIFTS: Contact your company’s personnel office to see if they will match your gift to The Land Conservancy of New Jersey. This way you can double your gift!

APPRECIATED SECURITIES: Please contact us if you would like to donate stock or personal property so we may properly credit your donation. Contact Director of Development Amber Ray at (973) 541-1010 x25 or aray@tlc-nj.org.

DONOR ADVISED FUNDS: By donating donor advised funds, you can receive an immediate tax benefit for your charitable contribution. The Land Conservancy’s EIN and Federal Tax ID is 22-2378868.

PLEDGES: You may spread out payments for up to five years on a schedule convenient to you. To set up a plan, contact Amber Ray at (973) 541-1010 x25 or aray@tlc-nj.org.

The Land Conservancy of New Jersey is a 501(c)(3) non-profit organization.
Your contributions are tax-deductible to the extent allowed by law.

The Land Conservancy of New Jersey



NON-PROFIT
US POSTAGE
PAID
W. CALDWELL, NJ
PERMIT NO. 921



The Land Conservancy
of New Jersey

ANNUAL REPORT

- 2022 -

